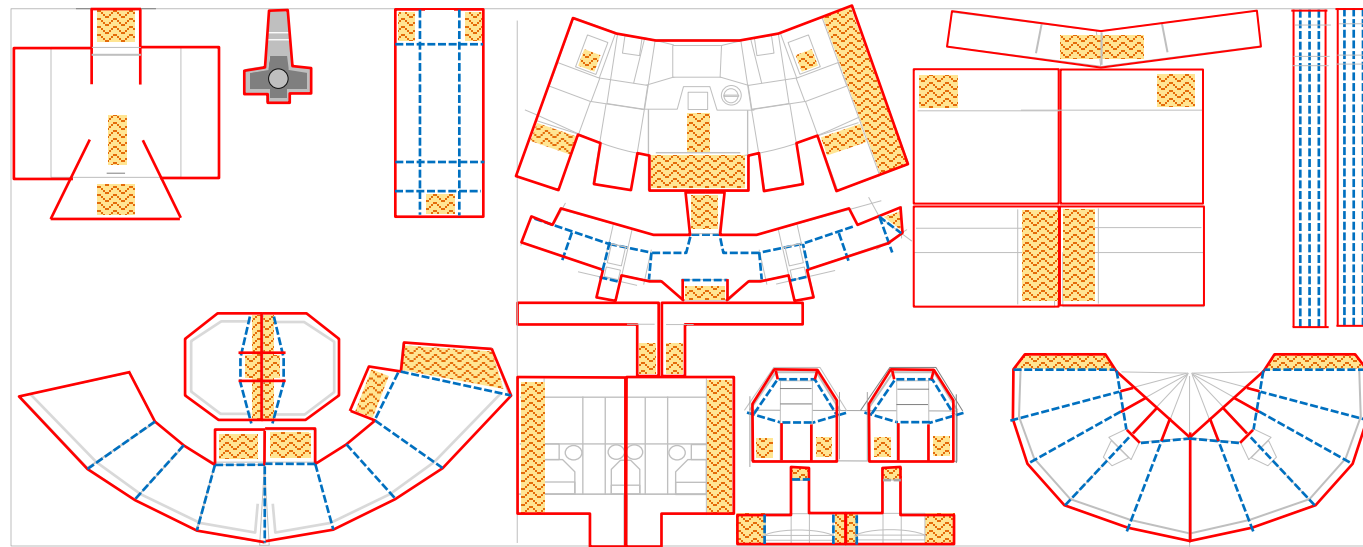
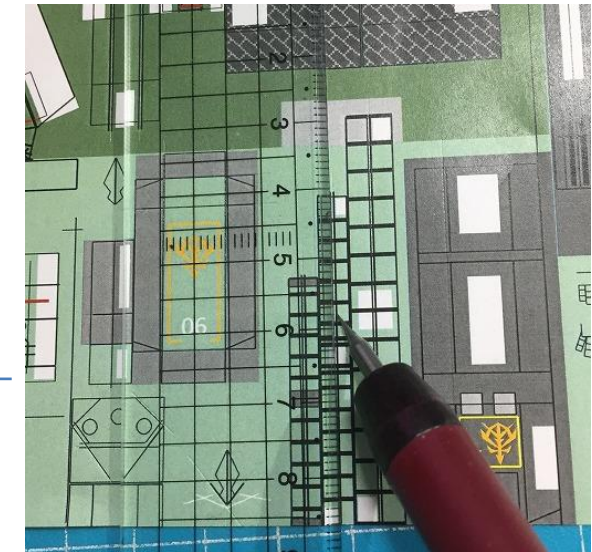


# Summary : 全体



- 切り取り (Cut)
- - - 折る (Fold)  
折りスジ必要  
(with Fold streaks)
- · · 折る (Fold)  
おりスジ不要  
(without Fold streaks)
- のり付け (Glue)



折り曲げる箇所には折りスジをつけておくことをお勧めします

紙のサイズはA4。  
厚さはコピー用紙くらいのものご使用ください。  
(わたしはコンビニのコピー機でプリントしています)



このような棒などを準備いただくと作りやすくなります。  
8mmのものは先端を丸くしています (頭部の形を整えるため)



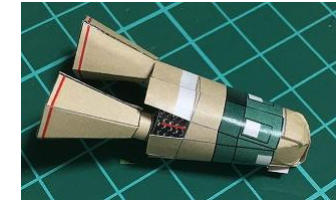
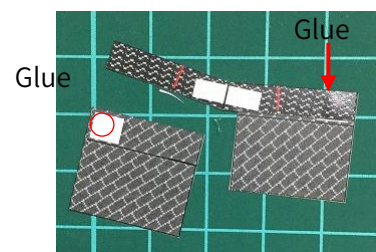
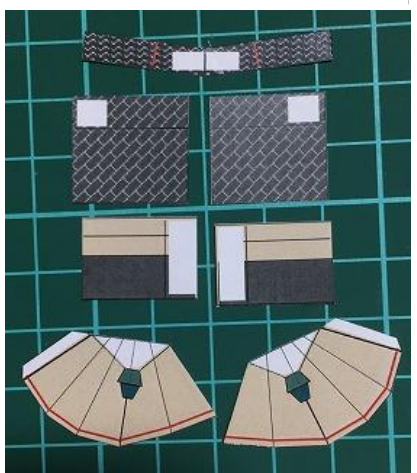
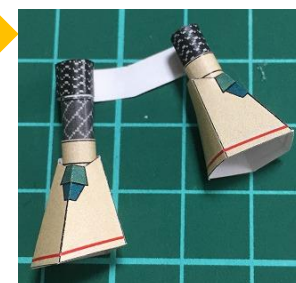
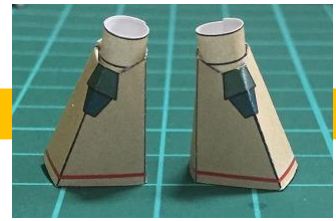
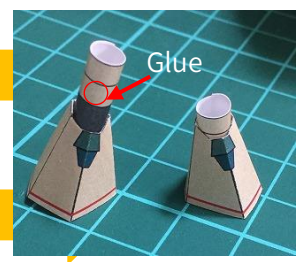
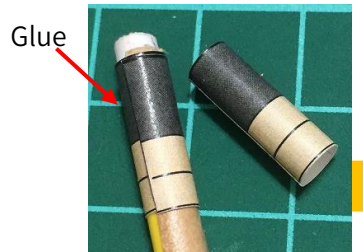
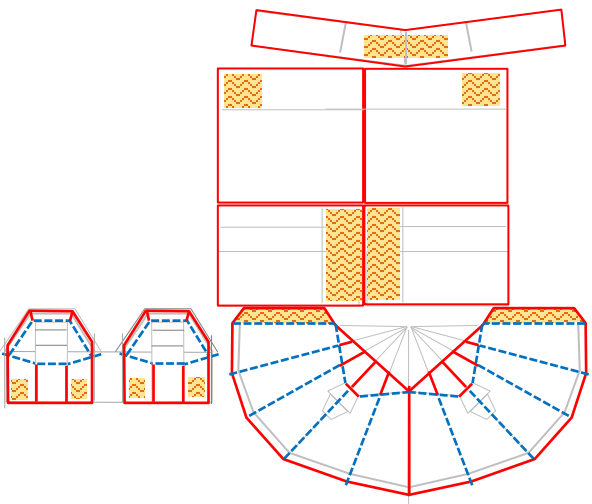
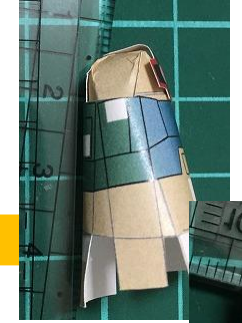
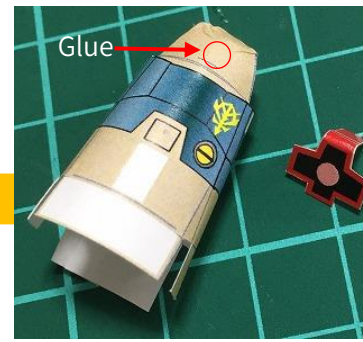
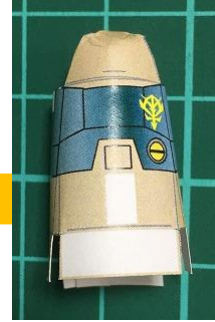
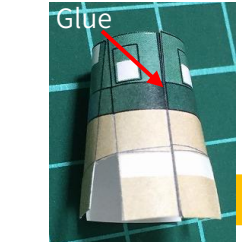
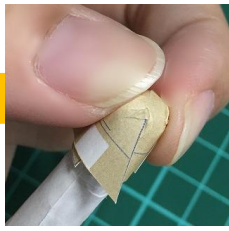
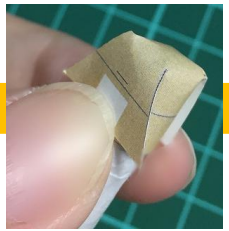
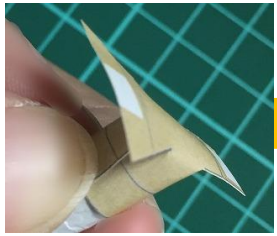
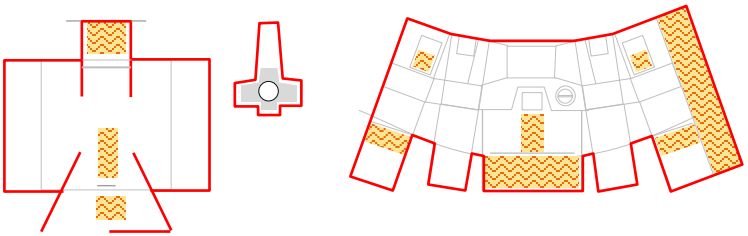
Body + Head : 頭部と胴体

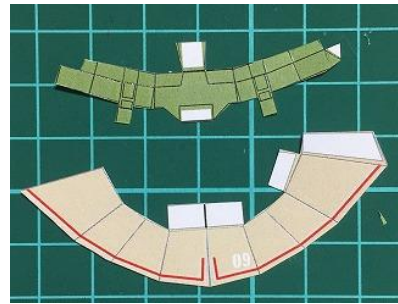
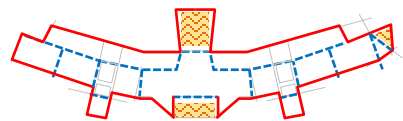
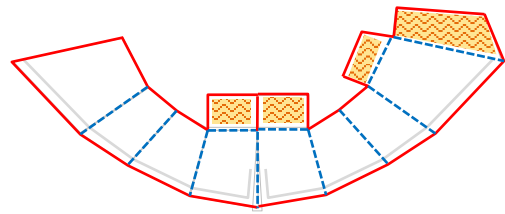
— 切り取り(Cut)

- - - 折る(Fold)  
折りスジ必要  
(with Fold streaks)

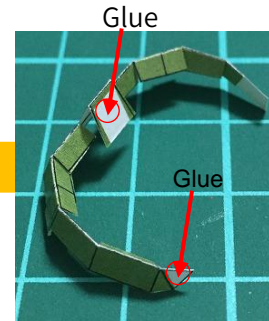
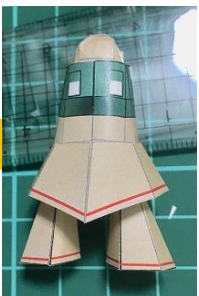
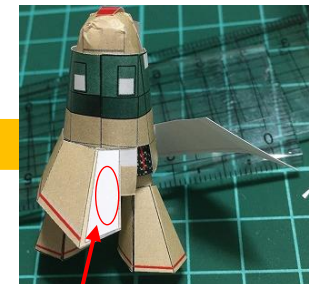
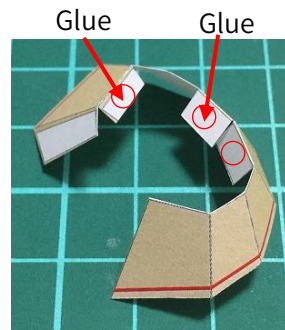
⋯ 折る(Fold)  
おりスジ不要  
(without Fold streaks)

のり付け(Glue)

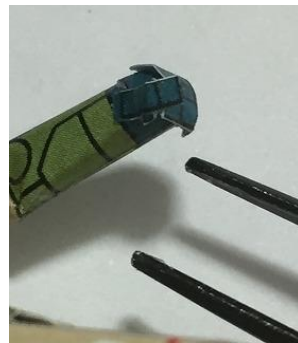
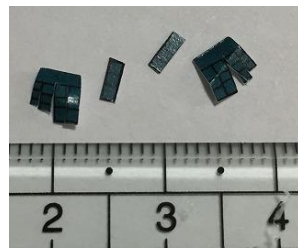
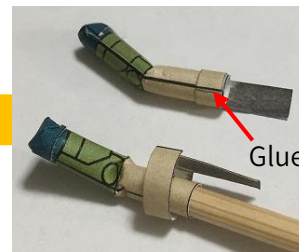
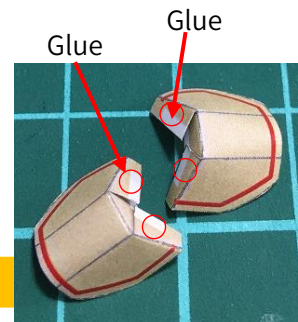
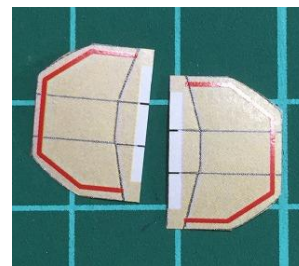
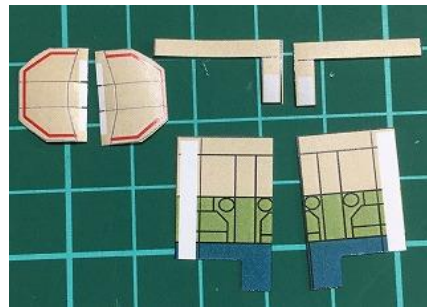
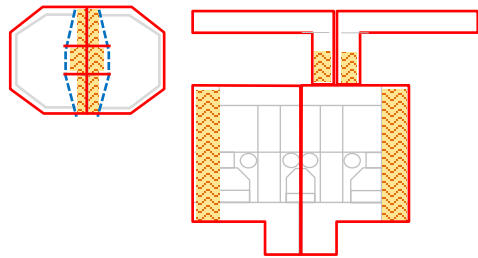


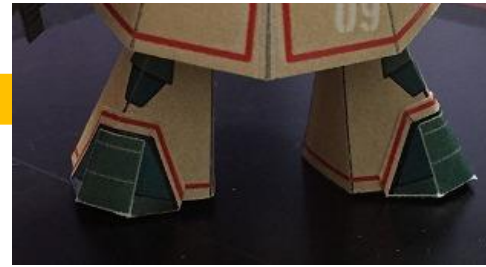
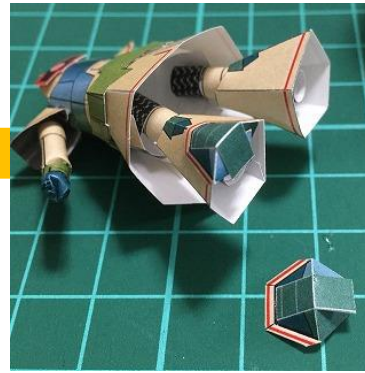
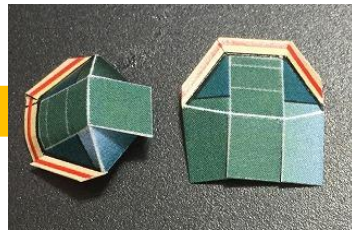
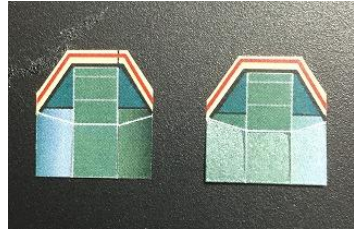
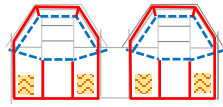


- 切り取り (Cut)
- - - 折る (Fold)  
折りスジ必要  
(with Fold streaks)
- - - 折る (Fold)  
おりスジ不要  
(without Fold streaks)
- のり付け (Glue)

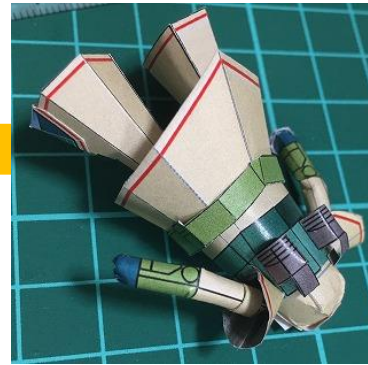
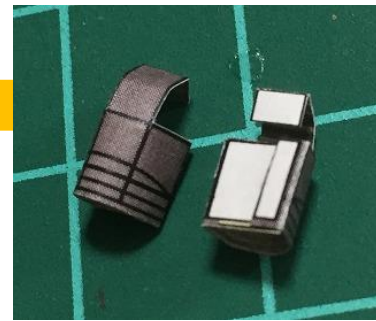
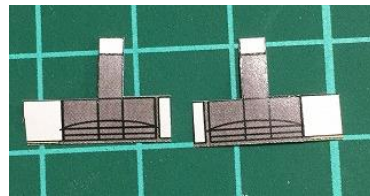
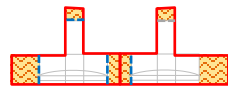
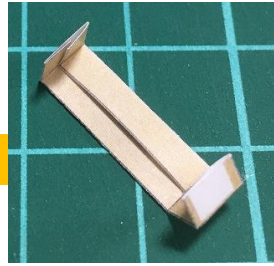
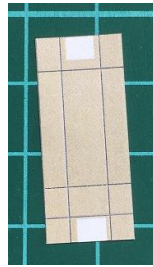
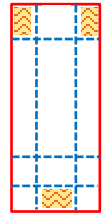


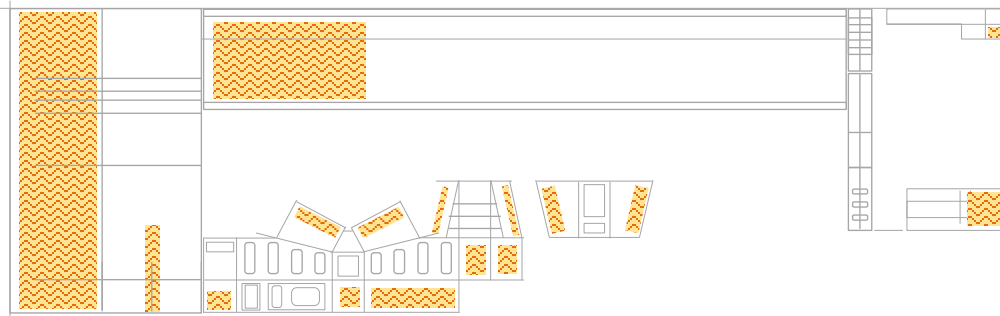
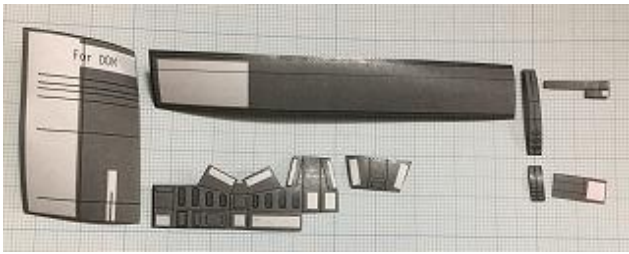
### ARMS : 腕





- 切り取り (Cut)
- - - 折る (Fold)  
折りスジ必要  
(with Fold streaks)
- - - 折る (Fold)  
おりスジ不要  
(without Fold streaks)
- のり付け (Glue)





- 切り取り(Cut)
- - - 折る(Fold)  
折りスジ必要  
(with Fold streaks)
- - - - - 折る(Fold)  
おりスジ不要  
(without Fold streaks)
- のり付け(Glue)

